



Research Foundation



The Prosperity Pulse

Issues of Concern by Industry Classification – Cross tabs

Quarter 1 2017

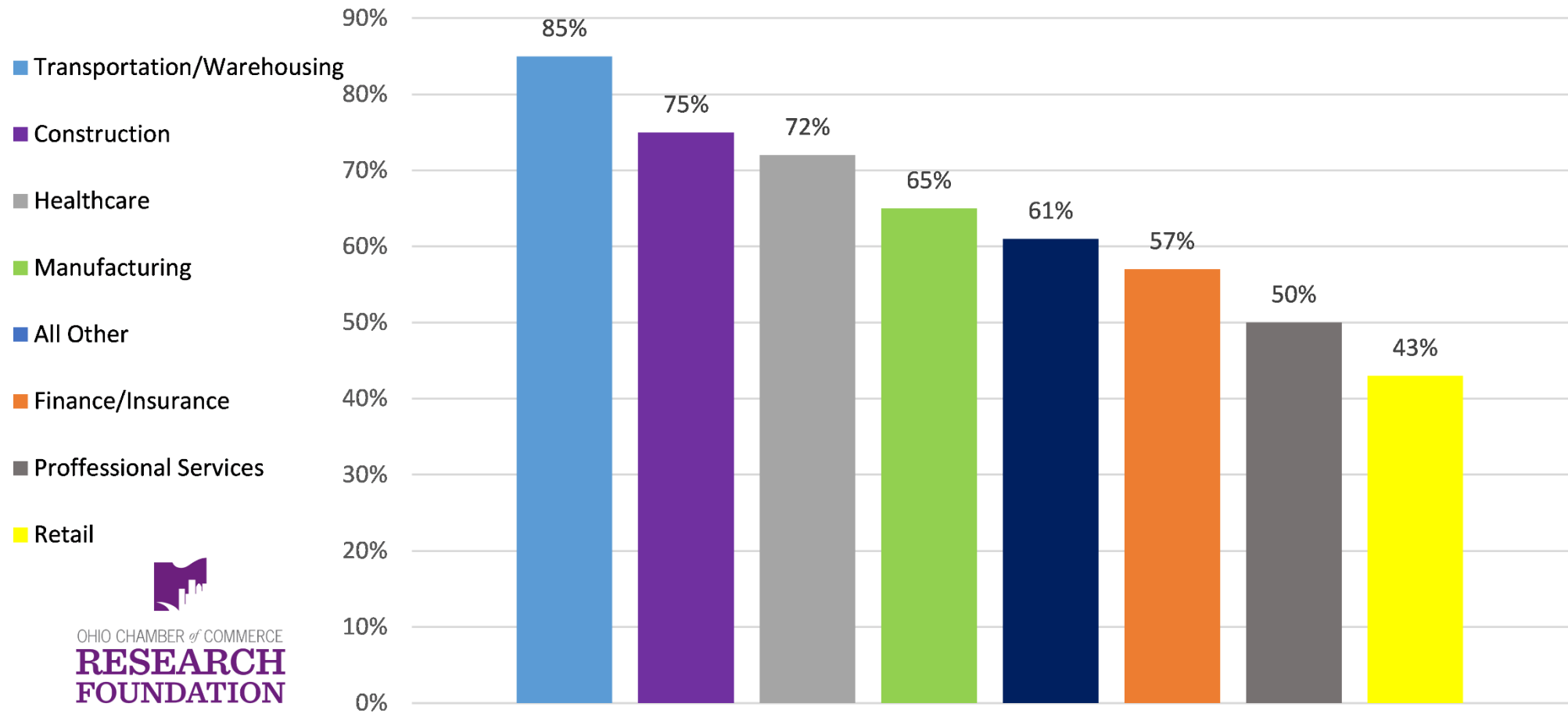
CLOUT
r e s e a r c h

Margin of Error +/- 4.85 percentage points

On a scale of 1 – 10 how concerned are you about Federal Regulations & Interference? 1 being not concerned and 10 being very concerned

Federal Government		INDUSTRY CATEGORY							Total	
		CONSTRUCTION	MANUFACTURING	RETAIL	TRANS-WAREHOUSING	FINANCE-INSURANCE	PROF-TECHNICAL	HEALTHCARE-SOCIAL		OTHER
1	Count	0	1	0	0	2	9	5	14	31
	% within INDUSTRY	.0%	2.3%	.0%	.0%	5.4%	23.7%	11.9%	9.2%	7.7%
2	Count	0	2	5	1	2	2	3	21	36
	% within INDUSTRY	.0%	4.7%	14.3%	3.8%	5.4%	5.3%	7.1%	13.8%	8.9%
3	Count	0	1	0	0	4	2	0	9	16
	% within INDUSTRY	.0%	2.3%	.0%	.0%	10.8%	5.3%	.0%	5.9%	4.0%
4	Count	1	5	6	0	0	2	2	8	24
	% within INDUSTRY	3.1%	11.6%	17.1%	.0%	.0%	5.3%	4.8%	5.3%	5.9%
5	Count	7	6	9	3	8	1	2	15	51
	% within INDUSTRY	21.9%	14.0%	25.7%	11.5%	21.6%	2.6%	4.8%	9.9%	12.6%
6	Count	4	2	4	7	2	4	1	26	50
	% within INDUSTRY	12.5%	4.7%	11.4%	26.9%	5.4%	10.5%	2.4%	17.1%	12.3%
7	Count	2	7	2	1	2	6	8	17	45
	% within INDUSTRY	6.3%	16.3%	5.7%	3.8%	5.4%	15.8%	19.0%	11.2%	11.1%
8	Count	9	8	4	7	6	3	10	13	60
	% within INDUSTRY	28.1%	18.6%	11.4%	26.9%	16.2%	7.9%	23.8%	8.6%	14.8%
9	Count	6	7	2	4	6	3	2	16	46
	% within INDUSTRY	18.8%	16.3%	5.7%	15.4%	16.2%	7.9%	4.8%	10.5%	11.4%
10	Count	3	4	3	3	5	6	9	13	46
	% within INDUSTRY	9.4%	9.3%	8.6%	11.5%	13.5%	15.8%	21.4%	8.6%	11.4%
Total	Count	32	43	35	26	37	38	42	152	405
	% within INDUSTRY	100.0%	100.0%	100.0%	100.0%	100.0%	100.0%	100.0%	100.0%	100.0%

Percentage of Ohio Business Leaders Concerned with Federal Regulations and/or Interference, by Industry Class

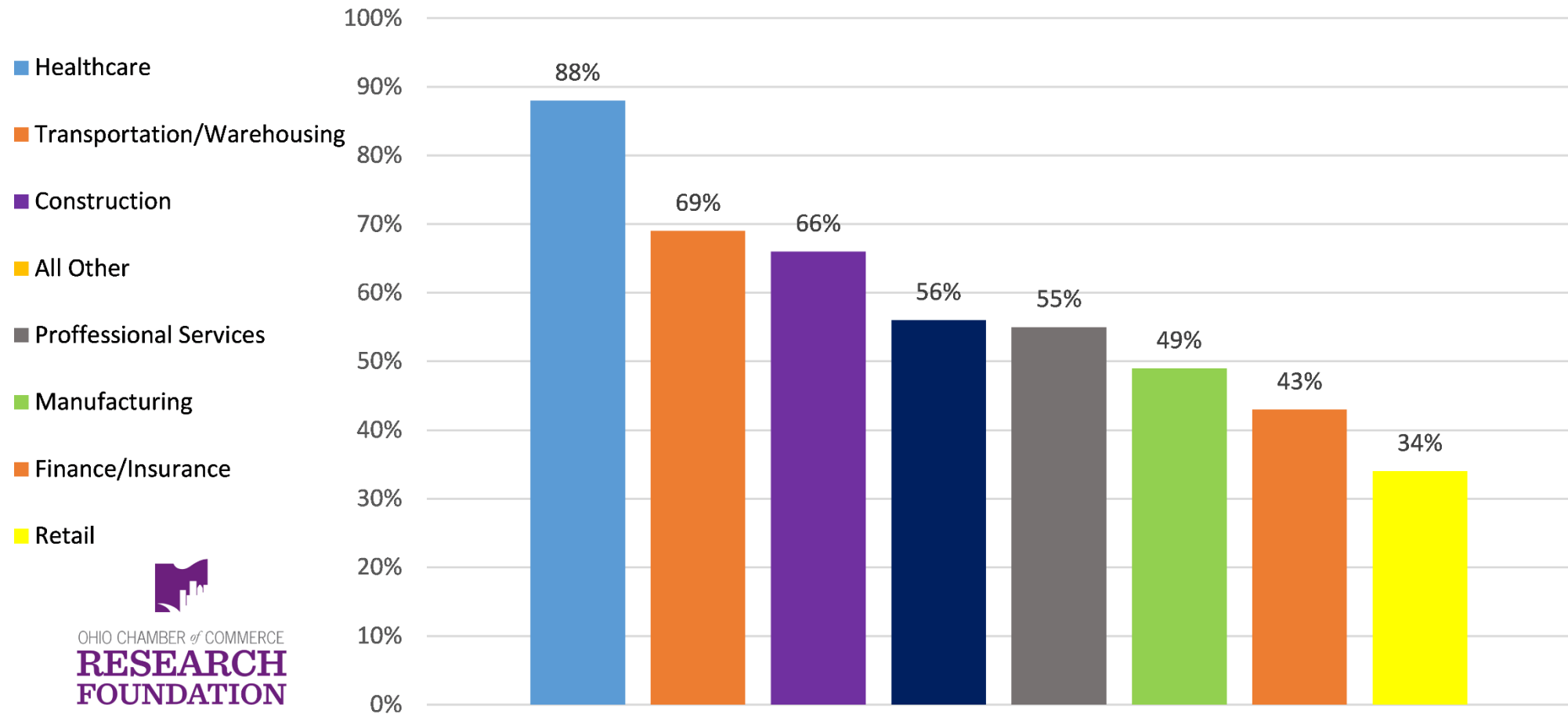


On a scale of 1 – 10 how concerned are you about State Regulations & Interference? 1 being not concerned and 10 being very concerned

ISSUE - STATE REG * INDUSTRY CATEGORY Crosstabulation

		INDUSTRY CATEGORY							Total		
		CONSTRUCTION	MANUFACTURING	RETAIL	TRANS-WAREHOUSING	FINANCE-INSURANCE	PROF-TECHNICAL	HEALTHCARE-SOCIAL		OTHER	
ISSUE - STATE REG	1	Count	5	1	0	0	7	9	1	8	31
	% within INDUSTRY	15.6%	2.3%	.0%	.0%	18.9%	23.7%	2.4%	5.3%	7.7%	
	2	Count	0	3	2	1	5	2	0	14	27
	% within INDUSTRY	.0%	7.0%	5.7%	3.8%	13.5%	5.3%	.0%	9.2%	6.7%	
	3	Count	0	3	4	1	1	0	1	9	19
	% within INDUSTRY	.0%	7.0%	11.4%	3.8%	2.7%	.0%	2.4%	5.9%	4.7%	
	4	Count	1	6	7	1	2	1	3	11	32
	% within INDUSTRY	3.1%	14.0%	20.0%	3.8%	5.4%	2.6%	7.1%	7.2%	7.9%	
	5	Count	5	9	10	5	6	5	0	25	65
	% within INDUSTRY	15.6%	20.9%	28.6%	19.2%	16.2%	13.2%	.0%	16.4%	16.0%	
	6	Count	3	5	2	7	3	5	4	21	50
	% within INDUSTRY	9.4%	11.6%	5.7%	26.9%	8.1%	13.2%	9.5%	13.8%	12.3%	
	7	Count	9	3	2	0	4	9	12	15	54
	% within INDUSTRY	28.1%	7.0%	5.7%	.0%	10.8%	23.7%	28.6%	9.9%	13.3%	
	8	Count	7	4	1	6	3	3	6	19	49
	% within INDUSTRY	21.9%	9.3%	2.9%	23.1%	8.1%	7.9%	14.3%	12.5%	12.1%	
	9	Count	0	6	2	2	5	3	3	14	35
	% within INDUSTRY	.0%	14.0%	5.7%	7.7%	13.5%	7.9%	7.1%	9.2%	8.6%	
	10	Count	2	3	5	3	1	1	12	16	43
	% within INDUSTRY	6.3%	7.0%	14.3%	11.5%	2.7%	2.6%	28.6%	10.5%	10.6%	
Total	Count	Count	43	35	26	37	38	42	152	405	
% within INDUSTRY	% within INDUSTRY	100.0%	100.0%	100.0%	100.0%	100.0%	100.0%	100.0%	100.0%		

Percentage of Ohio Business Leaders Concerned with State Regulations and/or Interference, by Industry Class



Summary Report, Full Survey Questions and More can be found at: www.ohiochamberfoundation.com/projects/

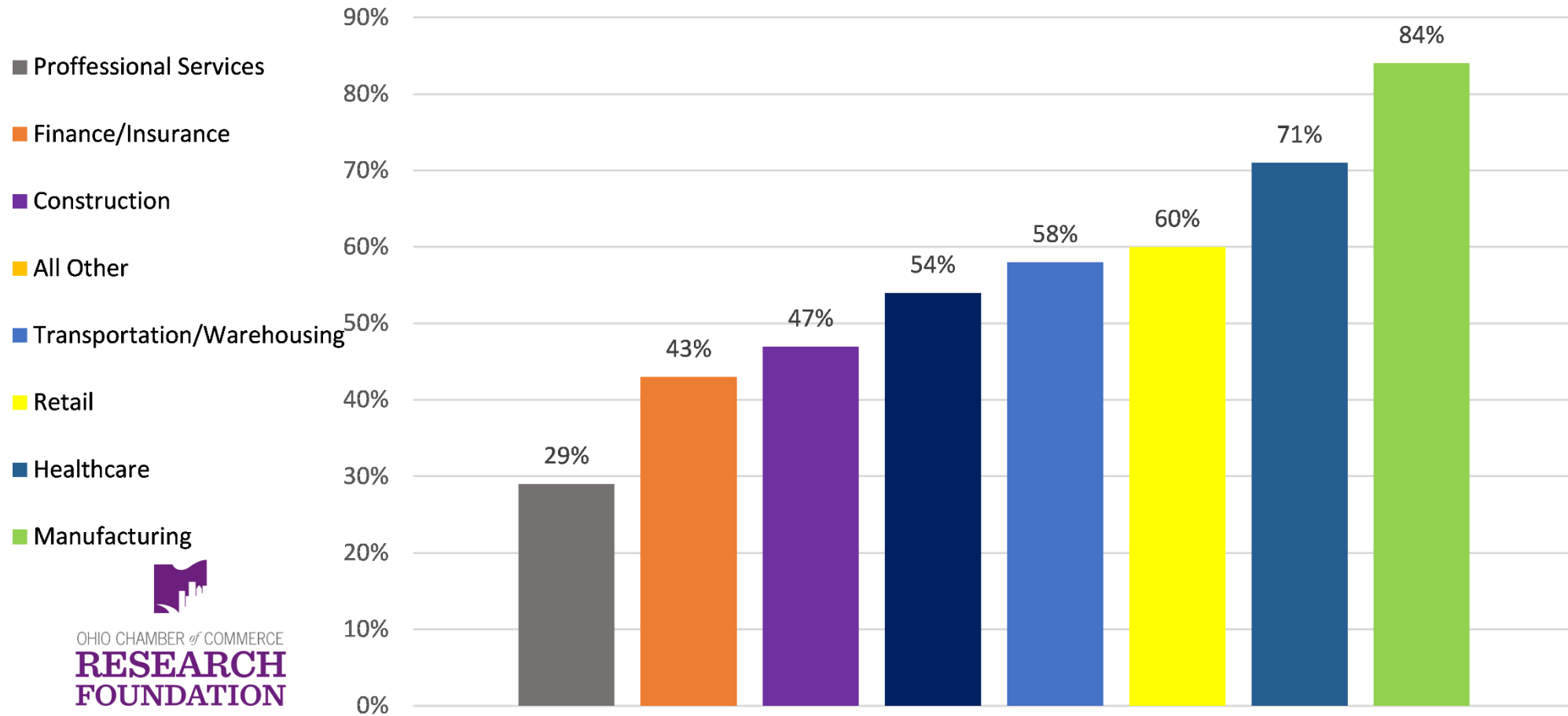
On a scale of 1 – 10 how concerned are you about Economic Uncertainty?

1 being not concerned and 10 being very concerned

ISSUE - ECON UNCERTAINTY * INDUSTRY CATEGORY Crosstabulation

		INDUSTRY CATEGORY								Total	
		CONSTRUCTION	MANUFACTURING	RETAIL	TRANS-WAREHOUSING	FINANCE-INSURANCE	PROF-TECHNICAL	HEALTHCARE-SOCIAL	OTHER		
ISSUE - ECON UNCERTAINTY	1	Count	2	1	1	3	0	4	0	6	17
		% within INDUSTRY	6.3%	2.3%	2.9%	11.5%	.0%	10.5%	.0%	3.9%	4.2%
	2	Count	1	1	0	1	4	5	4	13	29
		% within INDUSTRY	3.1%	2.3%	.0%	3.8%	10.8%	13.2%	9.5%	8.6%	7.2%
	3	Count	0	2	0	2	6	7	0	6	23
		% within INDUSTRY	.0%	4.7%	.0%	7.7%	16.2%	18.4%	.0%	3.9%	5.7%
	4	Count	2	6	2	2	2	1	2	11	28
		% within INDUSTRY	6.3%	14.0%	5.7%	7.7%	5.4%	2.6%	4.8%	7.2%	6.9%
	5	Count	12	6	11	3	9	10	6	34	91
		% within INDUSTRY	37.5%	14.0%	31.4%	11.5%	24.3%	26.3%	14.3%	22.4%	22.5%
6	Count	8	11	4	5	5	2	7	21	63	
	% within INDUSTRY	25.0%	25.6%	11.4%	19.2%	13.5%	5.3%	16.7%	13.8%	15.6%	
7	Count	4	9	10	6	4	1	4	32	70	
	% within INDUSTRY	12.5%	20.9%	28.6%	23.1%	10.8%	2.6%	9.5%	21.1%	17.3%	
8	Count	2	6	7	3	2	3	14	12	49	
	% within INDUSTRY	6.3%	14.0%	20.0%	11.5%	5.4%	7.9%	33.3%	7.9%	12.1%	
9	Count	0	1	0	0	3	2	0	7	13	
	% within INDUSTRY	.0%	2.3%	.0%	.0%	8.1%	5.3%	.0%	4.6%	3.2%	
10	Count	1	0	0	1	2	3	5	10	22	
	% within INDUSTRY	3.1%	.0%	.0%	3.8%	5.4%	7.9%	11.9%	6.6%	5.4%	
Total	Count	Count	43	35	26	37	38	42	152	405	
	% within INDUSTRY	% within INDUSTRY	100.0%	100.0%	100.0%	100.0%	100.0%	100.0%	100.0%	100.0%	

Percentage of Ohio Business Leaders Concerned with Economic Uncertainty, by Industry Class

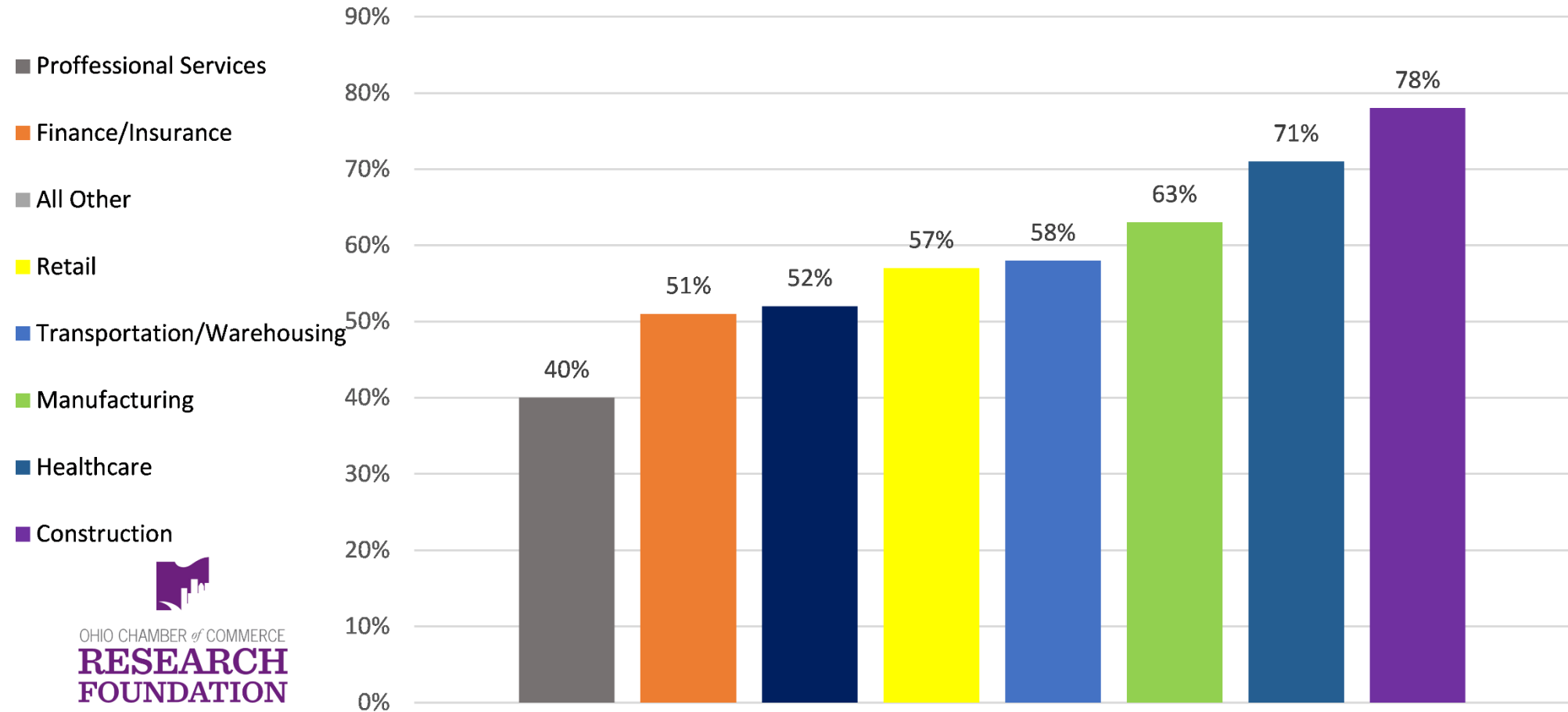


On a scale of 1 – 10 how concerned are you about Attracting/Hiring Qualified Employees?

1 being not concerned and 10 being very concerned

		INDUSTRY CATEGORY							Total		
		CONSTRUCTION	MANUFACTURING	RETAIL	TRANS- WAREHOUSING	FINANCE- INSURANCE	PROF-TECHNICAL	HEALTHCARE- SOCIAL		OTHER	
ISSUE - WORKFORCE	1	Count	1	2	0	4	2	1	6	21	37
		% within INDUSTRY	3.1%	4.7%	.0%	15.4%	5.4%	2.6%	14.3%	13.8%	9.1%
	2	Count	5	2	1	2	0	6	0	12	28
		% within INDUSTRY	15.6%	4.7%	2.9%	7.7%	.0%	15.8%	.0%	7.9%	6.9%
	3	Count	1	5	0	2	11	5	2	13	39
		% within INDUSTRY	3.1%	11.6%	.0%	7.7%	29.7%	13.2%	4.8%	8.6%	9.6%
	4	Count	0	5	1	0	2	2	1	3	14
		% within INDUSTRY	.0%	11.6%	2.9%	.0%	5.4%	5.3%	2.4%	2.0%	3.5%
	5	Count	0	2	13	3	3	9	3	24	57
		% within INDUSTRY	.0%	4.7%	37.1%	11.5%	8.1%	23.7%	7.1%	15.8%	14.1%
	6	Count	1	8	2	5	4	3	5	15	43
		% within INDUSTRY	3.1%	18.6%	5.7%	19.2%	10.8%	7.9%	11.9%	9.9%	10.6%
	7	Count	7	7	4	2	2	1	5	23	51
		% within INDUSTRY	21.9%	16.3%	11.4%	7.7%	5.4%	2.6%	11.9%	15.1%	12.6%
	8	Count	1	6	6	3	5	7	9	15	52
		% within INDUSTRY	3.1%	14.0%	17.1%	11.5%	13.5%	18.4%	21.4%	9.9%	12.8%
	9	Count	5	3	1	1	3	2	4	7	26
		% within INDUSTRY	15.6%	7.0%	2.9%	3.8%	8.1%	5.3%	9.5%	4.6%	6.4%
	10	Count	11	3	7	4	5	2	7	19	58
		% within INDUSTRY	34.4%	7.0%	20.0%	15.4%	13.5%	5.3%	16.7%	12.5%	14.3%
Total	Count	Count	43	35	26	37	38	42	152	405	
	% within INDUSTRY CATEGORY	% within INDUSTRY	100.0%	100.0%	100.0%	100.0%	100.0%	100.0%	100.0%	100.0%	

Percentage of Ohio Business Leaders Concerned with Attracting/Hiring Qualified Employees, by Industry Class



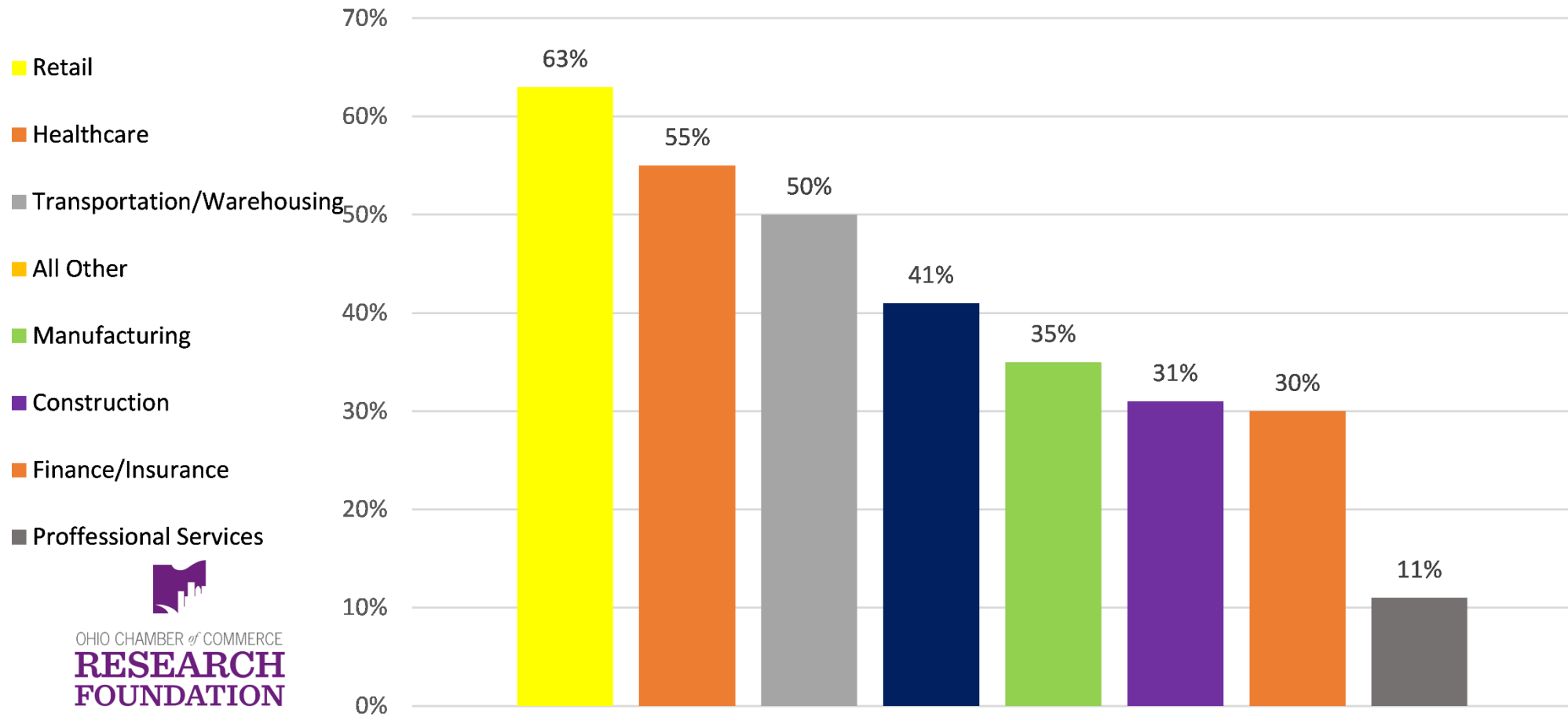
On a scale of 1 – 10 how concerned are you about the Cost of Energy?

1 being not concerned and 10 being very concerned

		INDUSTRY CATEGORY							Total		
		CONSTRUCTION	MANUFACTURING	RETAIL	TRANS- WAREHOUSING	FINANCE- INSURANCE	PROF-TECHNICAL	HEALTHCARE- SOCIAL		OTHER	
ISSUE - ENERGY COSTS	1	Count	5	0	1	1	4	5	6	7	29
		% within INDUSTRY	15.6%	.0%	2.9%	3.8%	10.8%	13.2%	14.3%	4.6%	7.2%
	2	Count	2	5	2	0	7	10	5	12	43
		% within INDUSTRY	6.3%	11.6%	5.7%	.0%	18.9%	26.3%	11.9%	7.9%	10.6%
	3	Count	3	8	2	4	5	9	1	25	57
		% within INDUSTRY	9.4%	18.6%	5.7%	15.4%	13.5%	23.7%	2.4%	16.4%	14.1%
	4	Count	1	2	3	0	2	0	1	10	19
		% within INDUSTRY	3.1%	4.7%	8.6%	.0%	5.4%	.0%	2.4%	6.6%	4.7%
	5	Count	11	13	5	8	8	10	6	36	97
		% within INDUSTRY	34.4%	30.2%	14.3%	30.8%	21.6%	26.3%	14.3%	23.7%	24.0%
	6	Count	3	4	10	6	4	2	9	30	68
		% within INDUSTRY	9.4%	9.3%	28.6%	23.1%	10.8%	5.3%	21.4%	19.7%	16.8%
	7	Count	3	6	4	2	2	2	4	15	38
		% within INDUSTRY	9.4%	14.0%	11.4%	7.7%	5.4%	5.3%	9.5%	9.9%	9.4%
	8	Count	1	1	2	2	5	0	8	10	29
		% within INDUSTRY	3.1%	2.3%	5.7%	7.7%	13.5%	.0%	19.0%	6.6%	7.2%
	9	Count	2	2	2	0	0	0	0	4	10
		% within INDUSTRY	6.3%	4.7%	5.7%	.0%	.0%	.0%	.0%	2.6%	2.5%
10	Count	1	2	4	3	0	0	2	3	15	
	% within INDUSTRY	3.1%	4.7%	11.4%	11.5%	.0%	.0%	4.8%	2.0%	3.7%	
Total	Count	Count	43	35	26	37	38	42	152	405	
	% within INDUSTRY	% within INDUSTRY	100.0%	100.0%	100.0%	100.0%	100.0%	100.0%	100.0%	100.0%	

Summary Report, Full Survey Questions and More can be found at: www.ohiochamberfoundation.com/projects/

Percentage of Ohio Business Leaders Concerned with the Cost of Energy, by Industry Class

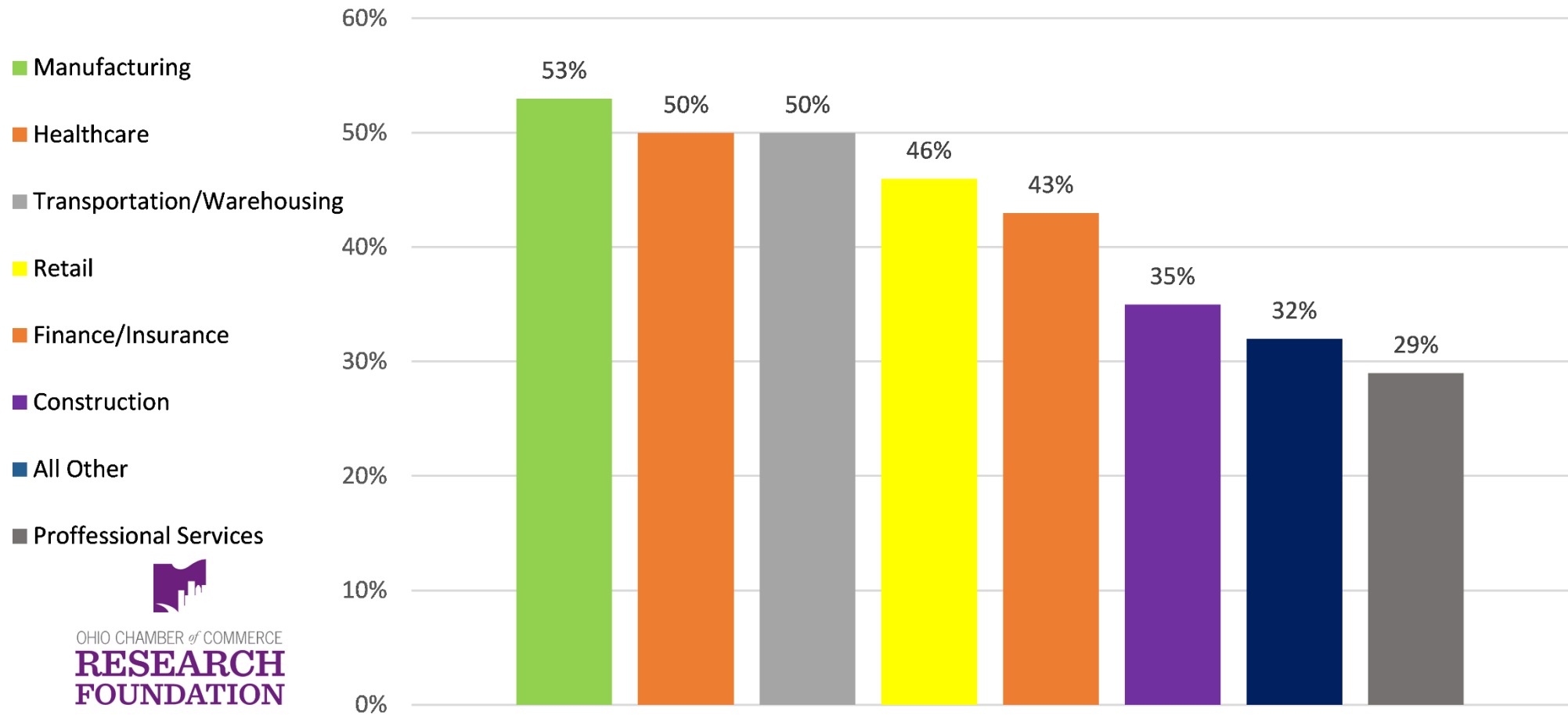


On a scale of 1 – 10 how concerned are you about Competition?

1 being not concerned and 10 being very concerned

		INDUSTRY CATEGORY							Total		
		CONSTRUCTION	MANUFACTURING	RETAIL	TRANS- WAREHOUSING	FINANCE- INSURANCE	PROF-TECHNICAL	HEALTHCARE- SOCIAL		OTHER	
ISSUE - COMPETITION	1	Count	0	6	1	3	2	6	13	22	53
		% within INDUSTRY	.0%	14.0%	2.9%	11.5%	5.4%	15.8%	31.0%	14.5%	13.1%
	2	Count	1	1	1	2	5	4	1	16	31
		% within INDUSTRY	3.1%	2.3%	2.9%	7.7%	13.5%	10.5%	2.4%	10.5%	7.7%
	3	Count	6	2	2	5	7	6	1	14	43
		% within INDUSTRY	18.8%	4.7%	5.7%	19.2%	18.9%	15.8%	2.4%	9.2%	10.6%
	4	Count	2	3	2	3	0	3	1	14	28
		% within INDUSTRY	6.3%	7.0%	5.7%	11.5%	.0%	7.9%	2.4%	9.2%	6.9%
	5	Count	12	8	13	5	7	8	5	38	96
		% within INDUSTRY	37.5%	18.6%	37.1%	19.2%	18.9%	21.1%	11.9%	25.0%	23.7%
	6	Count	4	5	3	4	2	0	2	14	34
		% within INDUSTRY	12.5%	11.6%	8.6%	15.4%	5.4%	.0%	4.8%	9.2%	8.4%
	7	Count	2	8	5	3	3	5	3	15	44
		% within INDUSTRY	6.3%	18.6%	14.3%	11.5%	8.1%	13.2%	7.1%	9.9%	10.9%
	8	Count	2	5	5	0	6	4	8	11	41
		% within INDUSTRY	6.3%	11.6%	14.3%	.0%	16.2%	10.5%	19.0%	7.2%	10.1%
	9	Count	2	1	2	0	2	2	2	0	11
		% within INDUSTRY	6.3%	2.3%	5.7%	.0%	5.4%	5.3%	4.8%	.0%	2.7%
	10	Count	1	4	1	1	3	0	6	8	24
		% within INDUSTRY	3.1%	9.3%	2.9%	3.8%	8.1%	.0%	14.3%	5.3%	5.9%
Total	Count	Count	43	35	26	37	38	42	152	405	
	% within INDUSTRY	% within INDUSTRY	100.0%	100.0%	100.0%	100.0%	100.0%	100.0%	100.0%	100.0%	

Percentage of Ohio Business Leaders Concerned with Competition, by Industry Class

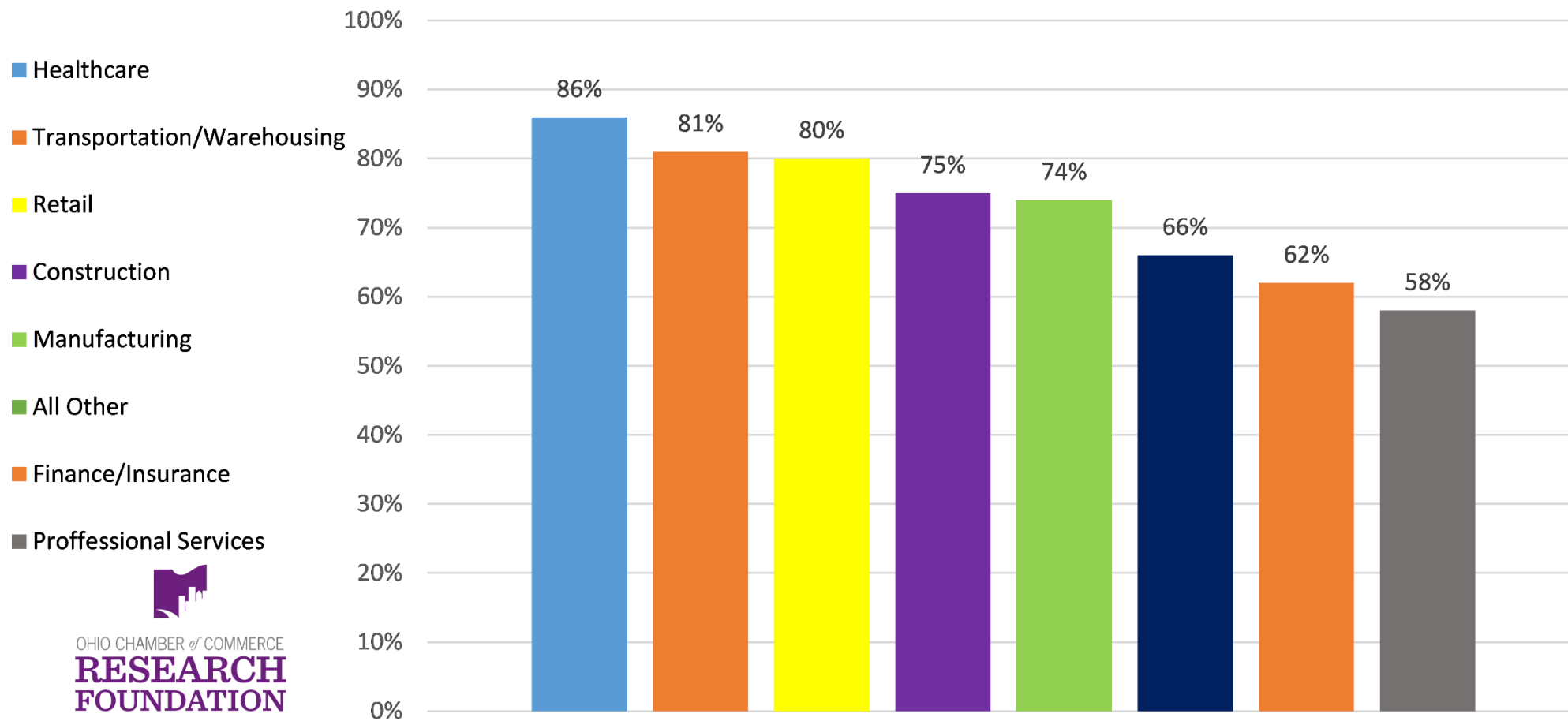


On a scale of 1 – 10 how concerned are you about Cost of Healthcare?

1 being not concerned and 10 being very concerned

		INDUSTRY CATEGORY							Total		
		CONSTRUCTION	MANUFACTURING	RETAIL	TRANS-WAREHOUSING	FINANCE-INSURANCE	PROF-TECHNICAL	HEALTHCARE-SOCIAL		OTHER	
ISSUE - HEALTHCARE	1	Count	5	4	2	1	4	2	0	10	28
		% within INDUSTRY	15.6%	9.3%	5.7%	3.8%	10.8%	5.3%	.0%	6.6%	6.9%
	2	Count	0	0	0	2	1	2	0	7	12
		% within INDUSTRY	.0%	.0%	.0%	7.7%	2.7%	5.3%	.0%	4.6%	3.0%
	3	Count	0	2	0	0	4	0	1	11	18
		% within INDUSTRY	.0%	4.7%	.0%	.0%	10.8%	.0%	2.4%	7.2%	4.4%
	4	Count	1	3	0	0	1	5	2	7	19
		% within INDUSTRY	3.1%	7.0%	.0%	.0%	2.7%	13.2%	4.8%	4.6%	4.7%
	5	Count	2	2	5	2	4	7	3	17	42
		% within INDUSTRY	6.3%	4.7%	14.3%	7.7%	10.8%	18.4%	7.1%	11.2%	10.4%
	6	Count	2	4	0	7	0	0	6	10	29
		% within INDUSTRY	6.3%	9.3%	.0%	26.9%	.0%	.0%	14.3%	6.6%	7.2%
	7	Count	4	9	2	2	3	2	3	20	45
		% within INDUSTRY	12.5%	20.9%	5.7%	7.7%	8.1%	5.3%	7.1%	13.2%	11.1%
	8	Count	2	4	3	5	6	2	12	23	57
		% within INDUSTRY	6.3%	9.3%	8.6%	19.2%	16.2%	5.3%	28.6%	15.1%	14.1%
	9	Count	4	6	8	4	3	10	5	22	62
		% within INDUSTRY	12.5%	14.0%	22.9%	15.4%	8.1%	26.3%	11.9%	14.5%	15.3%
	10	Count	12	9	15	3	11	8	10	25	93
		% within INDUSTRY	37.5%	20.9%	42.9%	11.5%	29.7%	21.1%	23.8%	16.4%	23.0%
Total	Count	Count	43	35	26	37	38	42	152	405	
	% within INDUSTRY	% within INDUSTRY	100.0%	100.0%	100.0%	100.0%	100.0%	100.0%	100.0%	100.0%	

Percentage of Ohio Business Leaders Concerned with the Cost of Healthcare, by Industry Class



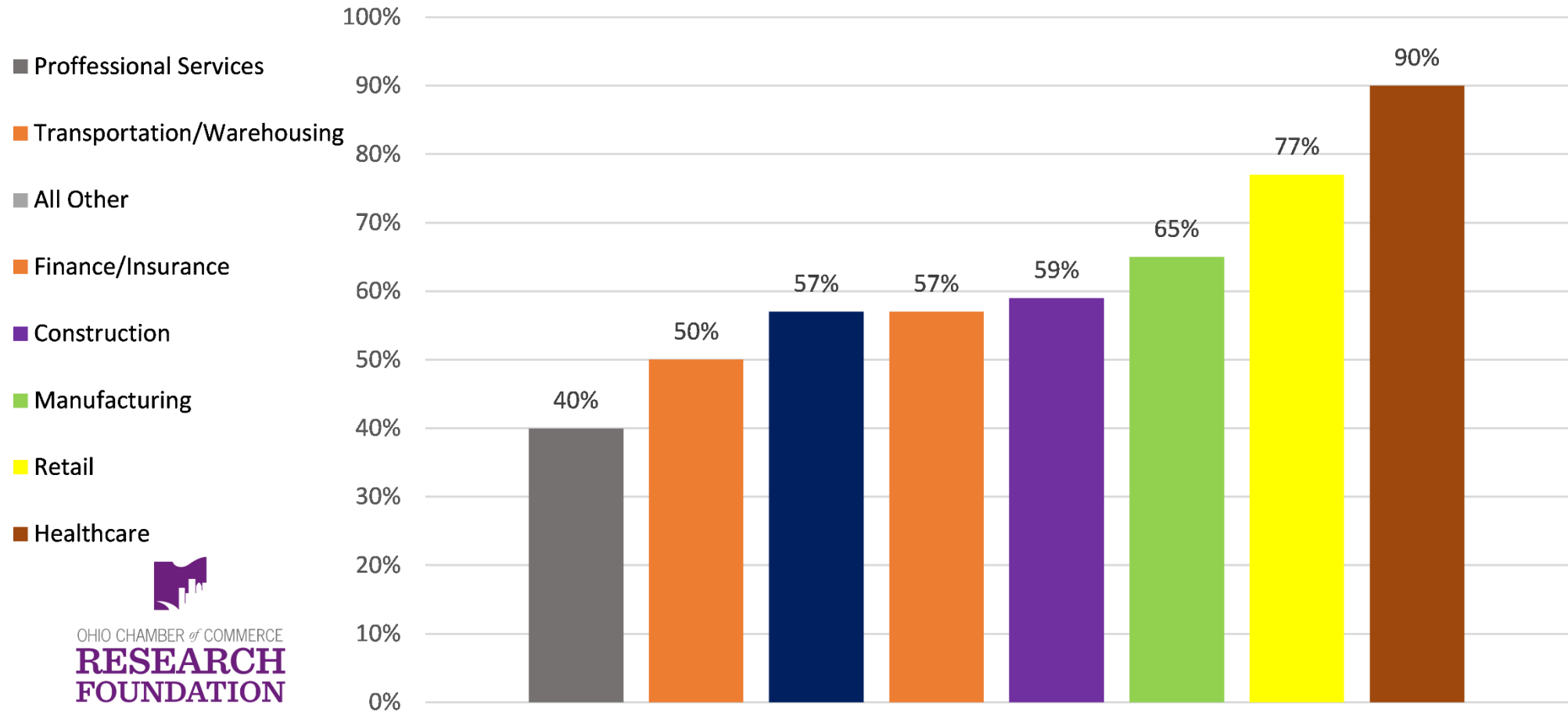
On a scale of 1 – 10 how concerned are you about Cost of All Employee Benefits?

1 being not concerned and 10 being very concerned

		INDUSTRY CATEGORY							Total		
		CONSTRUCTION	MANUFACTURING	RETAIL	TRANS- WAREHOUSING	FINANCE- INSURANCE	PROF-TECHNICAL	HEALTHCARE- SOCIAL		OTHER	
ISSUE - EMP. BENEFITS	1	Count	5	0	0	3	0	2	1	17	28
		% within INDUSTRY	15.6%	.0%	.0%	11.5%	.0%	5.3%	2.4%	11.2%	6.9%
	2	Count	0	0	2	2	1	1	0	10	16
		% within INDUSTRY	.0%	.0%	5.7%	7.7%	2.7%	2.6%	.0%	6.6%	4.0%
	3	Count	0	3	0	0	4	2	0	6	15
		% within INDUSTRY	.0%	7.0%	.0%	.0%	10.8%	5.3%	.0%	3.9%	3.7%
	4	Count	3	6	0	0	3	5	1	12	30
		% within INDUSTRY	9.4%	14.0%	.0%	.0%	8.1%	13.2%	2.4%	7.9%	7.4%
	5	Count	5	6	6	8	8	13	2	21	69
		% within INDUSTRY	15.6%	14.0%	17.1%	30.8%	21.6%	34.2%	4.8%	13.8%	17.0%
	6	Count	4	7	1	3	1	0	9	17	42
	% within INDUSTRY	12.5%	16.3%	2.9%	11.5%	2.7%	.0%	21.4%	11.2%	10.4%	
	7	Count	1	9	3	3	4	3	4	21	48
	% within INDUSTRY	3.1%	20.9%	8.6%	11.5%	10.8%	7.9%	9.5%	13.8%	11.9%	
	8	Count	4	5	8	5	4	5	11	19	61
	% within INDUSTRY	12.5%	11.6%	22.9%	19.2%	10.8%	13.2%	26.2%	12.5%	15.1%	
	9	Count	3	3	4	1	3	3	10	14	41
	% within INDUSTRY	9.4%	7.0%	11.4%	3.8%	8.1%	7.9%	23.8%	9.2%	10.1%	
	10	Count	7	4	11	1	9	4	4	15	55
	% within INDUSTRY	21.9%	9.3%	31.4%	3.8%	24.3%	10.5%	9.5%	9.9%	13.6%	
Total		Count	Count	43	35	26	37	38	42	152	405
		% within INDUSTRY	% within INDUSTRY	100.0%	100.0%	100.0%	100.0%	100.0%	100.0%	100.0%	100.0%

Summary Report, Full Survey Questions and More can be found at: www.ohiochamberfoundation.com/projects/

Percentage of Ohio Business Leaders Concerned with the Cost of All Employee Benefits, by Industry Class



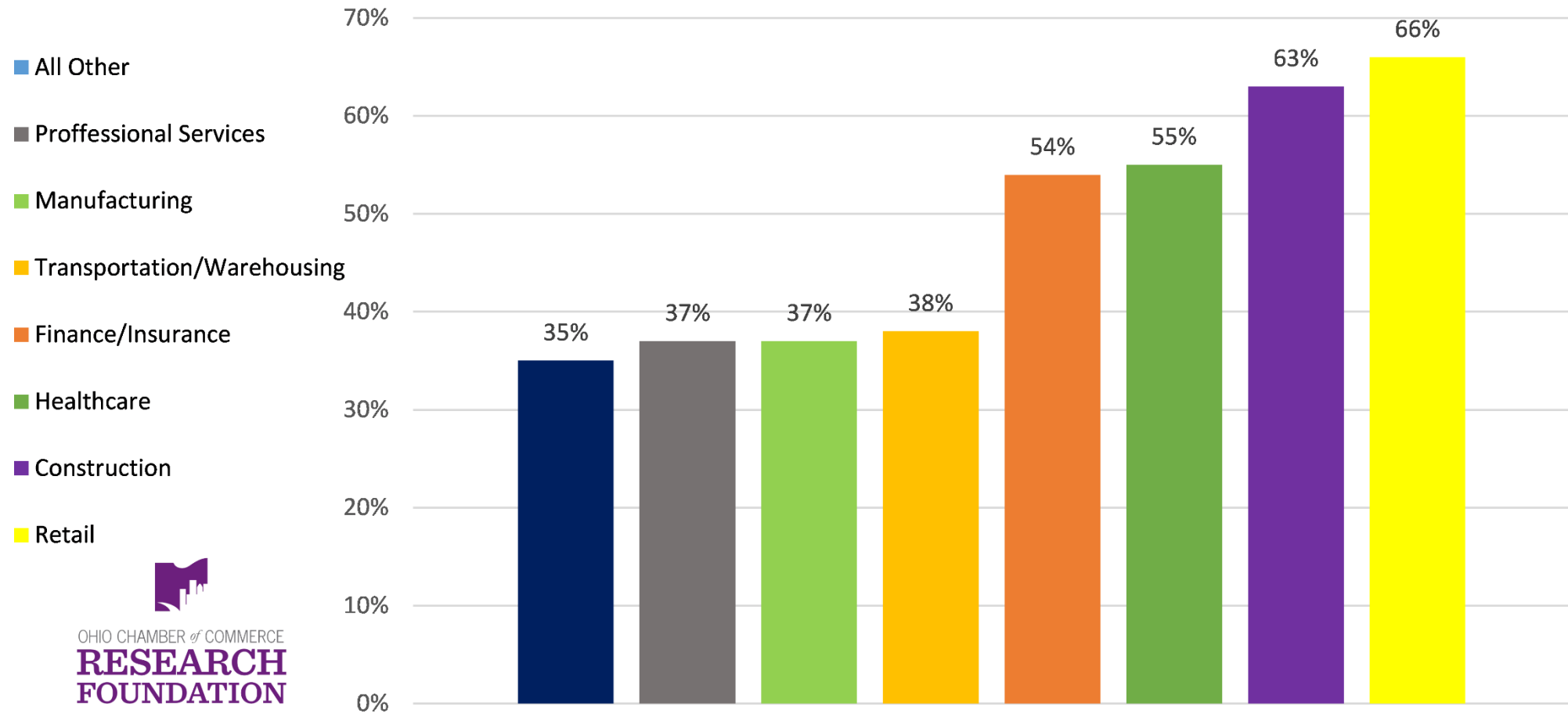
On a scale of 1 – 10 how concerned are you about Employee Productivity?

1 being not concerned and 10 being very concerned

		INDUSTRY CATEGORY							Total		
		CONSTRUCTION	MANUFACTURING	RETAIL	TRANS- WAREHOUSING	FINANCE- INSURANCE	PROF-TECHNICAL	HEALTHCARE- SOCIAL		OTHER	
ISSUE - PRODUCTIVITY	1	Count	1	7	0	5	0	8	4	26	51
		% within INDUSTRY	3.1%	16.3%	.0%	19.2%	.0%	21.1%	9.5%	17.1%	12.6%
	2	Count	0	2	3	1	3	2	4	17	32
		% within INDUSTRY	.0%	4.7%	8.6%	3.8%	8.1%	5.3%	9.5%	11.2%	7.9%
	3	Count	1	6	1	2	6	6	1	7	30
		% within INDUSTRY	3.1%	14.0%	2.9%	7.7%	16.2%	15.8%	2.4%	4.6%	7.4%
	4	Count	5	5	1	1	2	1	3	12	30
		% within INDUSTRY	15.6%	11.6%	2.9%	3.8%	5.4%	2.6%	7.1%	7.9%	7.4%
	5	Count	5	7	7	7	6	7	7	37	83
		% within INDUSTRY	15.6%	16.3%	20.0%	26.9%	16.2%	18.4%	16.7%	24.3%	20.5%
	6	Count	4	6	4	4	2	2	7	22	51
		% within INDUSTRY	12.5%	14.0%	11.4%	15.4%	5.4%	5.3%	16.7%	14.5%	12.6%
	7	Count	6	5	4	2	4	7	7	12	47
		% within INDUSTRY	18.8%	11.6%	11.4%	7.7%	10.8%	18.4%	16.7%	7.9%	11.6%
	8	Count	1	0	6	2	9	1	1	8	28
		% within INDUSTRY	3.1%	.0%	17.1%	7.7%	24.3%	2.6%	2.4%	5.3%	6.9%
	9	Count	3	3	4	1	0	3	0	6	20
		% within INDUSTRY	9.4%	7.0%	11.4%	3.8%	.0%	7.9%	.0%	3.9%	4.9%
	10	Count	6	2	5	1	5	1	8	5	33
		% within INDUSTRY	18.8%	4.7%	14.3%	3.8%	13.5%	2.6%	19.0%	3.3%	8.1%
Total	Count	Count	43	35	26	37	38	42	152	405	
	% within INDUSTRY	% within INDUSTRY	100.0%	100.0%	100.0%	100.0%	100.0%	100.0%	100.0%	100.0%	

Summary Report, Full Survey Questions and More can be found at: www.ohiochamberfoundation.com/projects/

Percentage of Ohio Business Leaders Concerned with Employee Productivity, by Industry Class

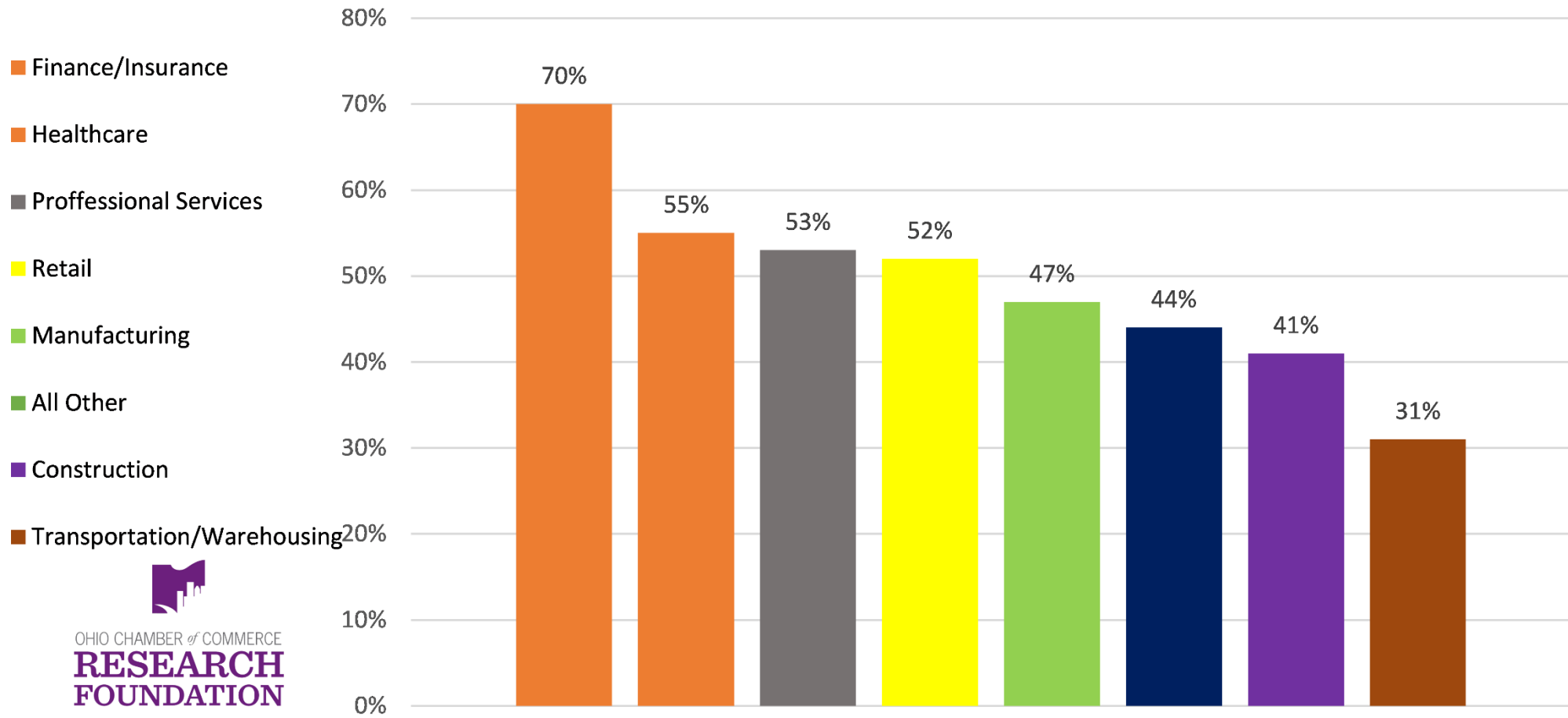


On a scale of 1 – 10 how concerned are you about Data Security?

1 being not concerned and 10 being very concerned

		INDUSTRY CATEGORY							Total		
		CONSTRUCTION	MANUFACTURING	RETAIL	TRANS- WAREHOUSING	FINANCE- INSURANCE	PROF-TECHNICAL	HEALTHCARE- SOCIAL		OTHER	
ISSUE - DATA SECURITY	1	Count	2	0	0	0	3	3	7	19	34
	% within INDUSTRY	6.3%	.0%	.0%	.0%	8.1%	7.9%	16.7%	12.5%	8.4%	
	2	Count	2	3	4	6	1	0	0	18	34
	% within INDUSTRY	6.3%	7.0%	11.4%	23.1%	2.7%	.0%	.0%	11.8%	8.4%	
	3	Count	3	6	0	4	1	7	0	4	25
	% within INDUSTRY	9.4%	14.0%	.0%	15.4%	2.7%	18.4%	.0%	2.6%	6.2%	
	4	Count	3	3	4	2	0	0	5	9	26
	% within INDUSTRY	9.4%	7.0%	11.4%	7.7%	.0%	.0%	11.9%	5.9%	6.4%	
	5	Count	9	11	9	6	6	8	7	35	91
	% within INDUSTRY	28.1%	25.6%	25.7%	23.1%	16.2%	21.1%	16.7%	23.0%	22.5%	
	6	Count	1	6	5	3	2	6	5	15	43
	% within INDUSTRY	3.1%	14.0%	14.3%	11.5%	5.4%	15.8%	11.9%	9.9%	10.6%	
	7	Count	1	6	3	4	6	7	2	19	48
	% within INDUSTRY	3.1%	14.0%	8.6%	15.4%	16.2%	18.4%	4.8%	12.5%	11.9%	
	8	Count	8	2	3	1	7	0	7	16	44
	% within INDUSTRY	25.0%	4.7%	8.6%	3.8%	18.9%	.0%	16.7%	10.5%	10.9%	
	9	Count	1	2	1	0	5	5	3	9	26
	% within INDUSTRY	3.1%	4.7%	2.9%	.0%	13.5%	13.2%	7.1%	5.9%	6.4%	
	10	Count	2	4	6	0	6	2	6	8	34
	% within INDUSTRY	6.3%	9.3%	17.1%	.0%	16.2%	5.3%	14.3%	5.3%	8.4%	
Total	Count	Count	43	35	26	37	38	42	152	405	
% within INDUSTRY	% within INDUSTRY	100.0%	100.0%	100.0%	100.0%	100.0%	100.0%	100.0%	100.0%	100.0%	

Percentage of Ohio Business Leaders Concerned with Data Security, by Industry Class



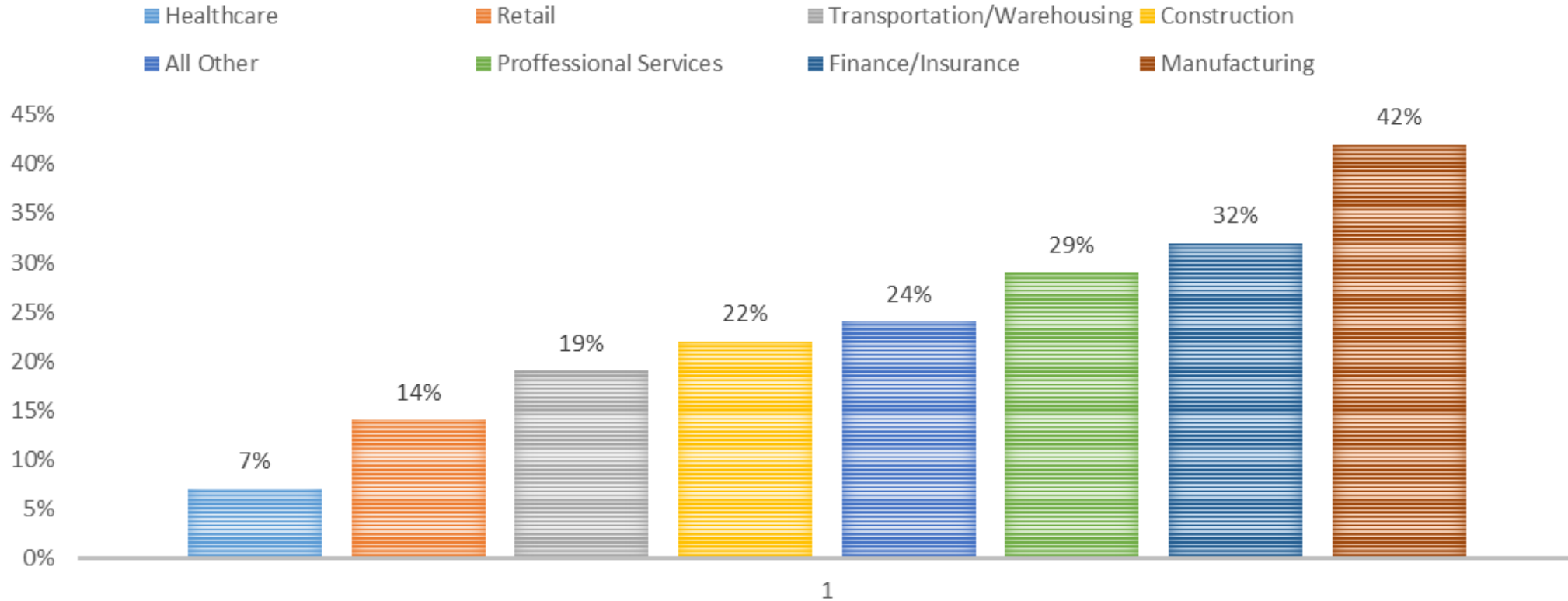
On a scale of 1 – 10 how concerned are you about Global Markets and Trade?

1 being not concerned and 10 being very concerned

ISSUE - GLOBAL TRADE * INDUSTRY CATEGORY Crosstabulation

		INDUSTRY CATEGORY							Total		
		CONSTRUCTION	MANUFACTURING	RETAIL	TRANS- WAREHOUSING	FINANCE- INSURANCE	PROF-TECHNICAL	HEALTHCARE- SOCIAL		OTHER	
ISSUE - GLOBAL TRADE	1	Count	11	6	6	7	10	11	8	38	97
	% within INDUSTRY	34.4%	14.0%	17.1%	26.9%	27.0%	28.9%	19.0%	25.0%	24.0%	
	2	Count	1	4	7	5	4	3	7	25	56
	% within INDUSTRY	3.1%	9.3%	20.0%	19.2%	10.8%	7.9%	16.7%	16.4%	13.8%	
	3	Count	2	5	1	3	3	4	6	6	30
	% within INDUSTRY	6.3%	11.6%	2.9%	11.5%	8.1%	10.5%	14.3%	3.9%	7.4%	
	4	Count	0	5	5	0	2	2	5	5	24
	% within INDUSTRY	.0%	11.6%	14.3%	.0%	5.4%	5.3%	11.9%	3.3%	5.9%	
	5	Count	10	5	11	6	6	7	13	42	100
	% within INDUSTRY	31.3%	11.6%	31.4%	23.1%	16.2%	18.4%	31.0%	27.6%	24.7%	
	6	Count	4	2	1	3	1	4	1	11	27
	% within INDUSTRY	12.5%	4.7%	2.9%	11.5%	2.7%	10.5%	2.4%	7.2%	6.7%	
	7	Count	0	5	0	0	3	6	1	7	22
	% within INDUSTRY	.0%	11.6%	.0%	.0%	8.1%	15.8%	2.4%	4.6%	5.4%	
	8	Count	1	6	3	2	3	0	0	8	23
	% within INDUSTRY	3.1%	14.0%	8.6%	7.7%	8.1%	.0%	.0%	5.3%	5.7%	
	9	Count	2	1	0	0	1	1	0	6	11
	% within INDUSTRY	6.3%	2.3%	.0%	.0%	2.7%	2.6%	.0%	3.9%	2.7%	
	10	Count	1	4	1	0	4	0	1	4	15
	% within INDUSTRY	3.1%	9.3%	2.9%	.0%	10.8%	.0%	2.4%	2.6%	3.7%	
Total	Count	Count	43	35	26	37	38	42	152	405	
% within INDUSTRY	% within INDUSTRY	100.0%	100.0%	100.0%	100.0%	100.0%	100.0%	100.0%	100.0%	100.0%	

PERCENTAGE OF OHIO BUSINESS LEADERS CONCERNED WITH GLOBAL MARKETS & TRADE, BY INDUSTRY CLASS

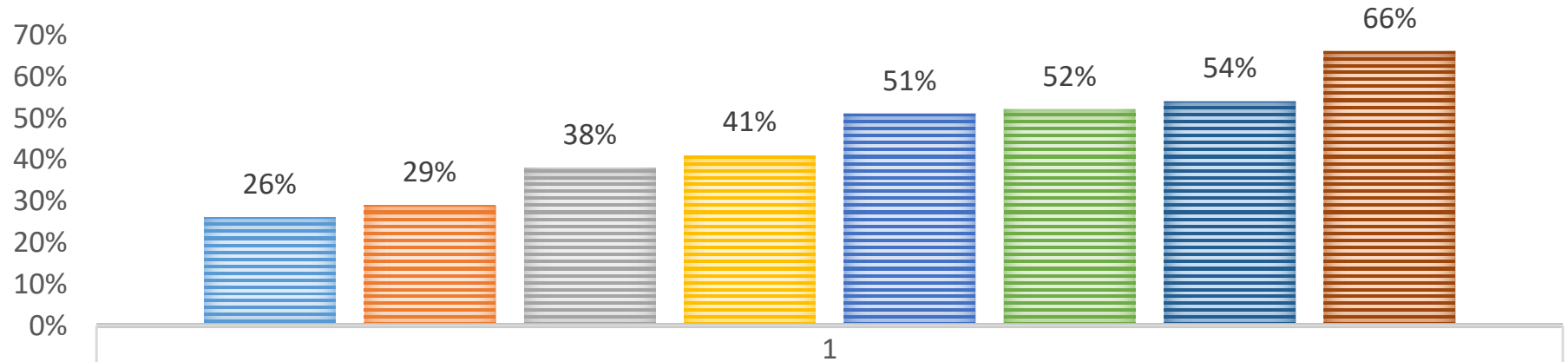


On a scale of 1 – 10 how concerned are you about Rising Wages & Salaries? 1 being not concerned and 10 being very concerned

ISSUE - RISING WAGES * INDUSTRY CATEGORY Crosstabulation

		INDUSTRY CATEGORY							Total		
		CONSTRUCTION	MANUFACTURING	RETAIL	TRANS- WAREHOUSING	FINANCE- INSURANCE	PROF-TECHNICAL	HEALTHCARE- SOCIAL		OTHER	
ISSUE - RISING WAGES	1	Count	6	5	0	2	2	8	5	24	52
	% within INDUSTRY	18.8%	11.6%	.0%	7.7%	5.4%	21.1%	11.9%	15.8%	12.8%	
	2	Count	1	3	3	2	4	0	5	18	36
	% within INDUSTRY	3.1%	7.0%	8.6%	7.7%	10.8%	.0%	11.9%	11.8%	8.9%	
	3	Count	0	5	1	1	3	5	1	10	26
	% within INDUSTRY	.0%	11.6%	2.9%	3.8%	8.1%	13.2%	2.4%	6.6%	6.4%	
	4	Count	1	5	0	2	2	2	1	8	21
	% within INDUSTRY	3.1%	11.6%	.0%	7.7%	5.4%	5.3%	2.4%	5.3%	5.2%	
	5	Count	12	14	8	5	7	12	8	30	96
	% within INDUSTRY	37.5%	32.6%	22.9%	19.2%	18.9%	31.6%	19.0%	19.7%	23.7%	
	6	Count	3	3	7	3	7	6	3	25	57
	% within INDUSTRY	9.4%	7.0%	20.0%	11.5%	18.9%	15.8%	7.1%	16.4%	14.1%	
	7	Count	2	4	2	8	2	2	7	17	44
	% within INDUSTRY	6.3%	9.3%	5.7%	30.8%	5.4%	5.3%	16.7%	11.2%	10.9%	
	8	Count	3	3	7	1	4	1	6	10	35
	% within INDUSTRY	9.4%	7.0%	20.0%	3.8%	10.8%	2.6%	14.3%	6.6%	8.6%	
	9	Count	1	0	0	2	2	2	2	4	13
	% within INDUSTRY	3.1%	.0%	.0%	7.7%	5.4%	5.3%	4.8%	2.6%	3.2%	
	10	Count	3	1	7	0	4	0	4	6	25
	% within INDUSTRY	9.4%	2.3%	20.0%	.0%	10.8%	.0%	9.5%	3.9%	6.2%	
Total	Count	Count	43	35	26	37	38	42	152	405	
% within INDUSTRY	% within INDUSTRY	100.0%	100.0%	100.0%	100.0%	100.0%	100.0%	100.0%	100.0%	100.0%	

PERCENTAGE OF OHIO BUSINESS LEADERS CONCERNED WITH RISING WAGES & SALARIES, BY INDUSTRY CLASS



	1
■ Manufacturing	26%
■ Professional Services	29%
■ Construction	38%
■ All Other	41%
■ Finance/Insurance	51%
■ Healthcare	52%
■ Transportation/Warehousing	54%
■ Retail	66%

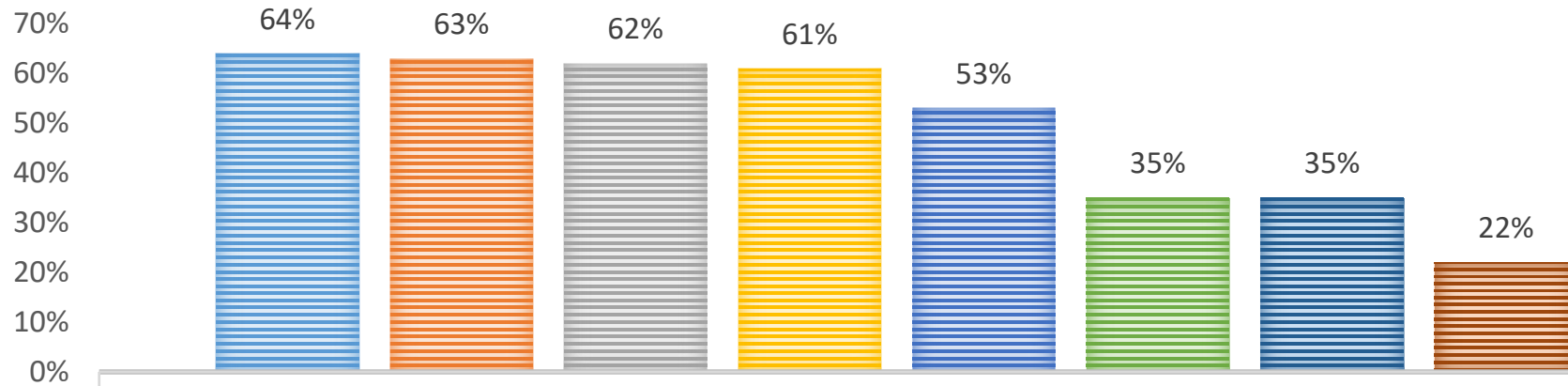
On a scale of 1 – 10 how concerned are you about Ohio's Political Environment?

1 being not concerned and 10 being very concerned

ISSUE - POLITICAL ENVIRONMENT * INDUSTRY CATEGORY Crosstabulation

		INDUSTRY CATEGORY							Total		
		CONSTRUCTION	MANUFACTURING	RETAIL	TRANS-WAREHOUSING	FINANCE-INSURANCE	PROF-TECHNICAL	HEALTHCARE-SOCIAL		OTHER	
ISSUE - POLITICAL ENVIRONMENT	1	Count	1	5	0	1	2	4	0	6	19
		% within INDUSTRY	3.1%	11.6%	.0%	3.8%	5.4%	10.5%	.0%	3.9%	4.7%
	2	Count	2	6	3	1	4	4	1	8	29
		% within INDUSTRY	6.3%	14.0%	8.6%	3.8%	10.8%	10.5%	2.4%	5.3%	7.2%
	3	Count	1	4	1	1	2	3	2	17	31
		% within INDUSTRY	3.1%	9.3%	2.9%	3.8%	5.4%	7.9%	4.8%	11.2%	7.7%
	4	Count	5	5	2	1	1	0	1	7	22
		% within INDUSTRY	15.6%	11.6%	5.7%	3.8%	2.7%	.0%	2.4%	4.6%	5.4%
	5	Count	16	8	7	6	15	7	11	22	92
		% within INDUSTRY	50.0%	18.6%	20.0%	23.1%	40.5%	18.4%	26.2%	14.5%	22.7%
	6	Count	1	7	3	2	5	3	4	32	57
		% within INDUSTRY	3.1%	16.3%	8.6%	7.7%	13.5%	7.9%	9.5%	21.1%	14.1%
	7	Count	1	5	3	4	1	3	3	15	35
		% within INDUSTRY	3.1%	11.6%	8.6%	15.4%	2.7%	7.9%	7.1%	9.9%	8.6%
	8	Count	1	0	6	5	2	4	8	23	49
		% within INDUSTRY	3.1%	.0%	17.1%	19.2%	5.4%	10.5%	19.0%	15.1%	12.1%
	9	Count	2	1	1	2	2	7	6	7	28
		% within INDUSTRY	6.3%	2.3%	2.9%	7.7%	5.4%	18.4%	14.3%	4.6%	6.9%
	10	Count	2	2	9	3	3	3	6	15	43
	% within INDUSTRY	6.3%	4.7%	25.7%	11.5%	8.1%	7.9%	14.3%	9.9%	10.6%	
Total	Count	Count	43	35	26	37	38	42	152	405	
	% within INDUSTRY	% within INDUSTRY	100.0%	100.0%	100.0%	100.0%	100.0%	100.0%	100.0%	100.0%	

PERCENTAGE OF OHIO BUSINESS LEADERS CONCERNED WITH OHIO'S POLITICAL ENVIRONMENT, BY INDUSTRY



	1
Healthcare	64%
Retail	63%
Transportation/Warehousing	62%
All Other	61%
Professional Services	53%
Manufacturing	35%
Finance/Insurance	35%
Construction	22%

Summary Report, Full Survey Questions and More can be found at: www.ohiochamberfoundation.com/projects/

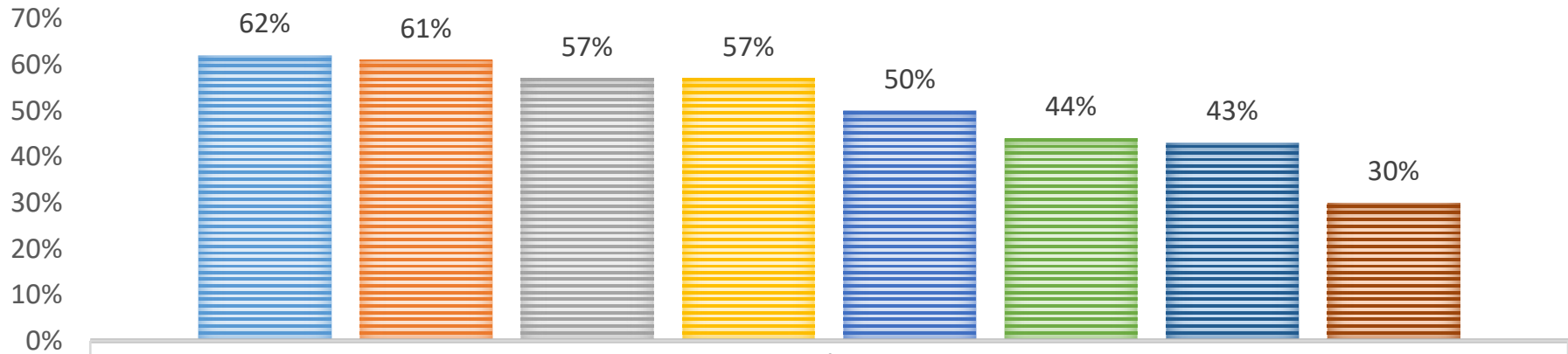
On a scale of 1 – 10 how concerned are you about Technology Changes?

1 being not concerned and 10 being very concerned

ISSUE - TECH CHANGES * INDUSTRY CATEGORY Crosstabulation

		INDUSTRY CATEGORY							Total		
		CONSTRUCTION	MANUFACTURING	RETAIL	TRANS-WAREHOUSING	FINANCE-INSURANCE	PROF-TECHNICAL	HEALTHCARE-SOCIAL		OTHER	
ISSUE - TECH CHANGES	1	Count	4	6	1	2	0	4	0	10	27
		% within INDUSTRY	12.5%	14.0%	2.9%	7.7%	.0%	10.5%	.0%	6.6%	6.7%
	2	Count	3	6	1	1	4	2	1	13	31
		% within INDUSTRY	9.4%	14.0%	2.9%	3.8%	10.8%	5.3%	2.4%	8.6%	7.7%
	3	Count	2	5	3	1	1	1	2	6	21
		% within INDUSTRY	6.3%	11.6%	8.6%	3.8%	2.7%	2.6%	4.8%	3.9%	5.2%
	4	Count	0	3	3	2	4	1	4	18	35
		% within INDUSTRY	.0%	7.0%	8.6%	7.7%	10.8%	2.6%	9.5%	11.8%	8.6%
	5	Count	9	10	7	7	5	7	11	40	96
		% within INDUSTRY	28.1%	23.3%	20.0%	26.9%	13.5%	18.4%	26.2%	26.3%	23.7%
	6	Count	1	3	4	6	9	2	8	19	52
		% within INDUSTRY	3.1%	7.0%	11.4%	23.1%	24.3%	5.3%	19.0%	12.5%	12.8%
	7	Count	8	4	3	2	8	13	6	20	64
		% within INDUSTRY	25.0%	9.3%	8.6%	7.7%	21.6%	34.2%	14.3%	13.2%	15.8%
	8	Count	3	1	7	4	2	6	6	13	42
		% within INDUSTRY	9.4%	2.3%	20.0%	15.4%	5.4%	15.8%	14.3%	8.6%	10.4%
	9	Count	0	3	1	1	1	2	0	10	18
		% within INDUSTRY	.0%	7.0%	2.9%	3.8%	2.7%	5.3%	.0%	6.6%	4.4%
	10	Count	2	2	5	0	3	0	4	3	19
		% within INDUSTRY	6.3%	4.7%	14.3%	.0%	8.1%	.0%	9.5%	2.0%	4.7%
Total		Count	43	35	26	37	38	42	152	405	
		% within INDUSTRY	100.0%	100.0%	100.0%	100.0%	100.0%	100.0%	100.0%	100.0%	

PERCENTAGE OF OHIO BUSINESS LEADERS CONCERNED WITH TECHNOLOGY CHANGES, BY INDUSTRY



	1
Finance/Insurance	62%
Professional Services	61%
Healthcare	57%
Retail	57%
Transportation/Warehousing	50%
Construction	44%
All Other	43%
Manufacturing	30%

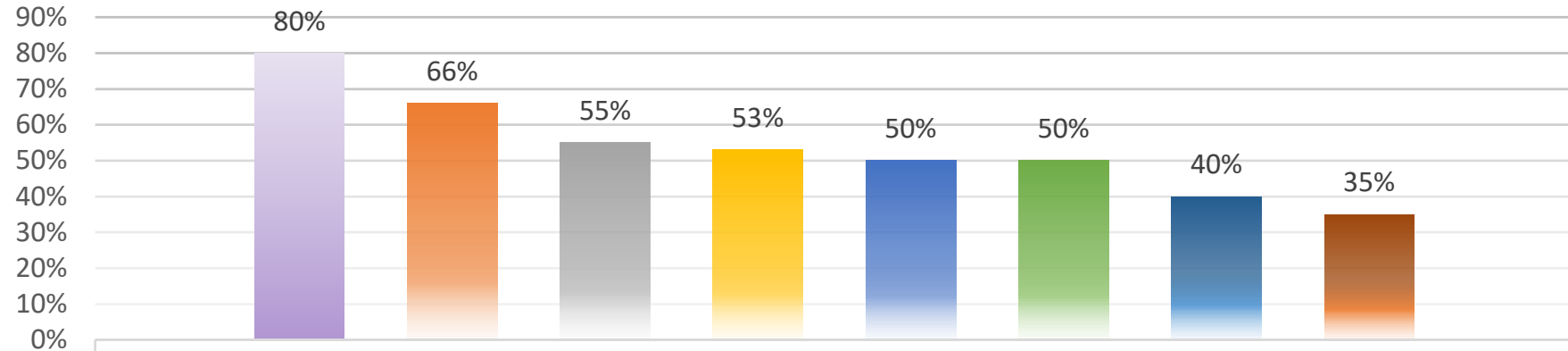
On a scale of 1 – 10 how concerned are you about State & Local Taxes?

1 being not concerned and 10 being very concerned

ISSUE - STATE/LOCAL TAXES * INDUSTRY CATEGORY Crosstabulation

		INDUSTRY CATEGORY							Total		
		CONSTRUCTION	MANUFACTURING	RETAIL	TRANS-WAREHOUSING	FINANCE-INSURANCE	PROF-TECHNICAL	HEALTHCARE-SOCIAL	OTHER	Total	
ISSUE - STATE/LOCAL TAXES	1	Count	6	4	0	2	4	3	2	5	26
	% within INDUSTRY	18.8%	9.3%	.0%	7.7%	10.8%	7.9%	4.8%	3.3%	6.4%	
	2	Count	1	4	0	1	4	1	2	12	25
	% within INDUSTRY	3.1%	9.3%	.0%	3.8%	10.8%	2.6%	4.8%	7.9%	6.2%	
	3	Count	0	4	2	1	2	1	2	17	29
	% within INDUSTRY	.0%	9.3%	5.7%	3.8%	5.4%	2.6%	4.8%	11.2%	7.2%	
	4	Count	2	3	0	0	0	1	9	5	20
	% within INDUSTRY	6.3%	7.0%	.0%	.0%	.0%	2.6%	21.4%	3.3%	4.9%	
	5	Count	7	11	5	9	14	7	4	32	89
	% within INDUSTRY	21.9%	25.6%	14.3%	34.6%	37.8%	18.4%	9.5%	21.1%	22.0%	
	6	Count	4	4	6	5	6	5	2	19	51
	% within INDUSTRY	12.5%	9.3%	17.1%	19.2%	16.2%	13.2%	4.8%	12.5%	12.6%	
	7	Count	1	5	6	3	0	11	3	23	52
	% within INDUSTRY	3.1%	11.6%	17.1%	11.5%	.0%	28.9%	7.1%	15.1%	12.8%	
	8	Count	8	4	7	2	3	6	6	11	47
	% within INDUSTRY	25.0%	9.3%	20.0%	7.7%	8.1%	15.8%	14.3%	7.2%	11.6%	
	9	Count	0	2	1	1	1	1	2	9	17
	% within INDUSTRY	.0%	4.7%	2.9%	3.8%	2.7%	2.6%	4.8%	5.9%	4.2%	
	10	Count	3	2	8	2	3	2	10	19	49
	% within INDUSTRY	9.4%	4.7%	22.9%	7.7%	8.1%	5.3%	23.8%	12.5%	12.1%	
Total	Count	Count	43	35	26	37	38	42	152	405	
% within INDUSTRY	% within INDUSTRY	100.0%	100.0%	100.0%	100.0%	100.0%	100.0%	100.0%	100.0%	100.0%	

PERCENTAGE OF OHIO BUSINESS LEADERS CONCERNED WITH STATE & LOCAL TAXES, BY INDUSTRY



	1
■ Retail	80%
■ Professional Services	66%
■ Healthcare	55%
■ All Other	53%
■ Transportation/Warehousing	50%
■ Construction	50%
■ Manufacturing	40%
■ Finance/Insurance	35%

“
**Those who cry out that government should
'do something' never even ask for data on
what has actually happened when the
government did something, compared to
when the government did nothing.**

”

Thomas Sowell

Summary Report, Full Survey Questions and More can be found at:

www.ohiochamberfoundation.com/projects/



#ProsperityPulse

@OCCResearch



OHIO CHAMBER *of* COMMERCE
**RESEARCH
FOUNDATION**

Summary Report, Full Survey Questions and More can be found at: www.ohiochamberfoundation.com/projects/